

# KVS

Free-standing cable distribution cabinets 232

Technical data 464

## FREE-STANDING CABLE DISTRIBUTION CABINETS



## Free-standing cable distribution cabinets

### Free-standing cable distribution cabinets KVS

The free-standing cable distribution cabinets KVS size 00-2 are made of glass-fiber-reinforced polyester. They are used for the electric power distribution in industry, in electrification of railroads, for the distribution of telecommunication cables, for street lighting. They are mounted on polyester or concrete pedestals.

- Standards: EN60439-5, VDE 0660/503, DIN 43629/1
- Three-point door closing with a revolving handle and the possibility of incorporating a half-cylinder insert
- The door opens at 180°
- Replacement of doors and lateral sides without tools
- A modern design with a surface unsuitable for posting up placards
- The cabinet equipment at choice
- A system with name plates for both internal and external use
- Protection classification IP 44
- Material resistant to UV radiation, acids, strokes, atmospheric influences
- Color: RAL 7035

### Cable distribution box-empty

Size  
00-2



**Cable distribution box-empty**

type	code No.	weight [kg]	packaging [pcs]
KVS00/10	001601001	14,3	1/1
KVS0/10	001602001	16,9	1/1
KVS1/10	001603001	20,2	1/1
KVS2/10	001604001	26,2	1/1

### Cable distribution boxes with Cu-busbars

Size  
00-2



**Cable distribution box with Cu-busbars**

type	code No.	weight [kg]	packaging [pcs]
KVS00/10	001601002	17,8	1/1
KVS0/10	001602002	21,7	1/1
KVS1/10	001603002	28,2	1/1
KVS2/10	001604002	35,1	1/1

## Mounting plate

### Mounting plate

type	code No.	weight [kg]	packaging [pcs]
MPL00/10 for KVS 00/10	001621001	2,4	1/1
MPL0/10 for KVS 0/10	001622001	3,8	1/1
MPL1/10 for KVS 1/10	001623001	4,2	1/1
MPL2/10 for KVS 2/10	001624001	6,1	1/1

## Polyester pedestal

### Polyester pedestal

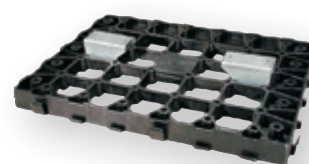
type	code No.	weight [kg]	packaging [pcs]
FP00/KS for KVS 00/10	001611001	14,7	1/1
FP0/KS for KVS 0/10	001612001	16,3	1/1
FP1/KS for KVS 1/10	001613001	18,9	1/1
FP2/KS for KVS 2/10	001614001	23,1	1/1



## Grid base plate

### Grid base plate

type	code No.	weight [kg]	packaging [pcs]
GPL00/10 for FP00	001631001	2,3	1/1
GPL0/10 for FP0	001632001	4,1	1/1
GPL1/10 for FP1	001633001	4,1	1/1
GPL2/10 for FP2	001634001	5,7	1/1



## Cabinet lighting

### Cabinet lighting

type	code No.	weight [kg]	packaging [pcs]
LTST	001691008	0,8	1/1



